

## Challenge

### Issue

This plant's FGD system was experiencing a loss of efficiency in their absorber recirculation pumps. After only 18 months of operation, the motor-driven current values increased from 11.1 Amps to 12.1 Amps - an increase of over 9%.

### Root Cause

Severe corrosion/abrasion of the pump volute and impeller resulted in reduced efficiency, requiring shutdown to repair or replace with new pumps.

## Solution

### Preparation

- Abrasive blast to Sa 3 with 5 mil (125 µm) angular profile

### Application

1. Application of 6mm **ARC MX1** on the suction wear plates, and 3-4 mm of **ARC BX2\*** to protect the volute body
2. Topcoat with **ARC S2** to provide a smooth flow efficient surface

\*ARC BX2 is the "Bulk" package size of ARC 897

## Results

### Inspection

Pumps are now operating with two years mean time between repair (MTBR) while maintaining the same efficiency level.

**Estimated 2 Year Savings**

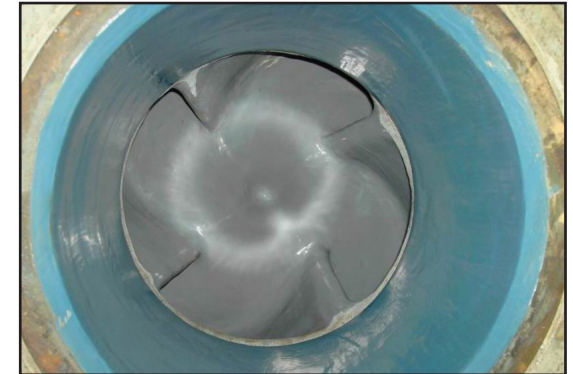
**\$5K**



New pump casing before application of ARC



Two new pumps protected with ARC



Completed application

\$=USD